

## 2MM SUPERFINE STEEL GUTTER GUARD PRODUCT SPECIFICATION SHEET



### PRODUCT DESCRIPTION

Blue Mountain Mesh 2mm Superfine steel gutter guard is designed to prevent leaves and debris from entering gutters and downpipes. Particularly suited to situations where a building has fine leaf trees, like jacarandas nearby; the fine aperture of Blue Mountain Mesh 2mm Superfine gutter guard, assists in minimising the entry of small or fine leaves into a buildings gutters.

The all steel, non-combustible mesh gutter guard minimises gutter maintenance and improves the quality of rain water collected for tanks. The proprietary hot dipped zinc coated and oven baked manufacturing process offers superior corrosion and heat resistance, providing superior protection for homes over the longer term.

### HOW IT WORKS

The Blue Mountain Mesh over-the-gutter, ski-slope design, system forms a physical barrier to prevent leaves and debris from entering gutters. The mesh fits from the outside edge of the gutter across the gutter section and then is attached to the roof surface. This creates a platform that suspends leaves and debris above the roof gutter, allowing the majority of material build-up to be blown away by wind action. Blue Mountain Mesh over-the-gutter gutter protection systems offer year round low-maintenance protection that keeps gutters from getting blocked, preventing flooding of eaves, ceiling and wall cavities; and extra protection from hail and flooding rains during storms.



### FEATURES AND BENEFITS

- + 2mm aperture – the finest mesh in our range, ideal for small leaf trees and fine debris
- + Strong and durable using hot dipped, galvanised (zinc coated) steel that is rust proofed and oven baked with the highest quality steel fixings and flashings
- + Custom made and available in the full COLORBOND® steel colour range
- + Fits all gutter profiles and can be adapted to fit all roof types including metal, tile and shingle
- + Screws match the full COLORBOND® steel colour range and comply with AS2331.1 and Surefastener Certification Scheme technical specification
- + Can be easily removed and reinstalled if gutters are to be replaced
- + Designed to shed leaves and debris whilst allowing sunlight and wind into the gutter so it dries out quickly after rain.

### COMPLIANCE

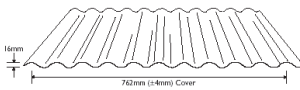
- + Conforms to the Australian Standard for the Construction of buildings in bushfire prone areas (AS 3959-2009)
- + Non-combustible material as per AS3959-2009 (CSIRO assessed)
- + Colour coded screws comply to AS2331.1 and Surefastener Certification Scheme Technical Specification
- + Conforms to the Building Code of Australia (BCA 2009)



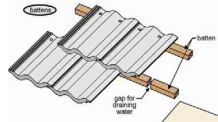
## 2MM SUPERFINE STEEL GUTTER GUARD

### MESH OPTIONS ROOF TYPES

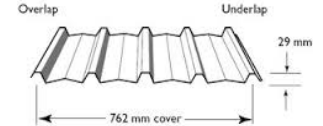
Corrugated



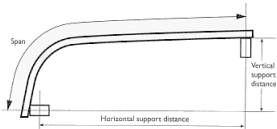
Tile



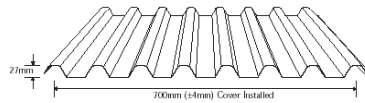
Trimdek®



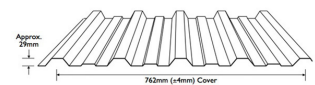
Bullnose



Longspan®



Monoclad®



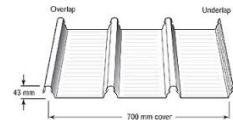
Decramastic



Spandek®



Klip-lok®



### ROLLS OR SHEETS

Blue Mountain Mesh 2mm Steel Superfine gutter guard can be purchased in rolls of up to 30 metres, or sheets in 915m lengths.\* Mesh is cut by the metre, please order in metres.

#### ROLLS

- + Easier to roll out along the gutter
- + Recommended installation for all roof types, except Trimdek
- + Custom made to your measurements

Maximum roll length : 30mm  
Maximum roll width : 915mm

#### SHEETS

- + Recommended for Trimdek as it comes in pre-notched sheets, so it's a much faster installation method
- + You're only installing one section at a time, but sheets need to be stitched together
- + Custom made to your measurements

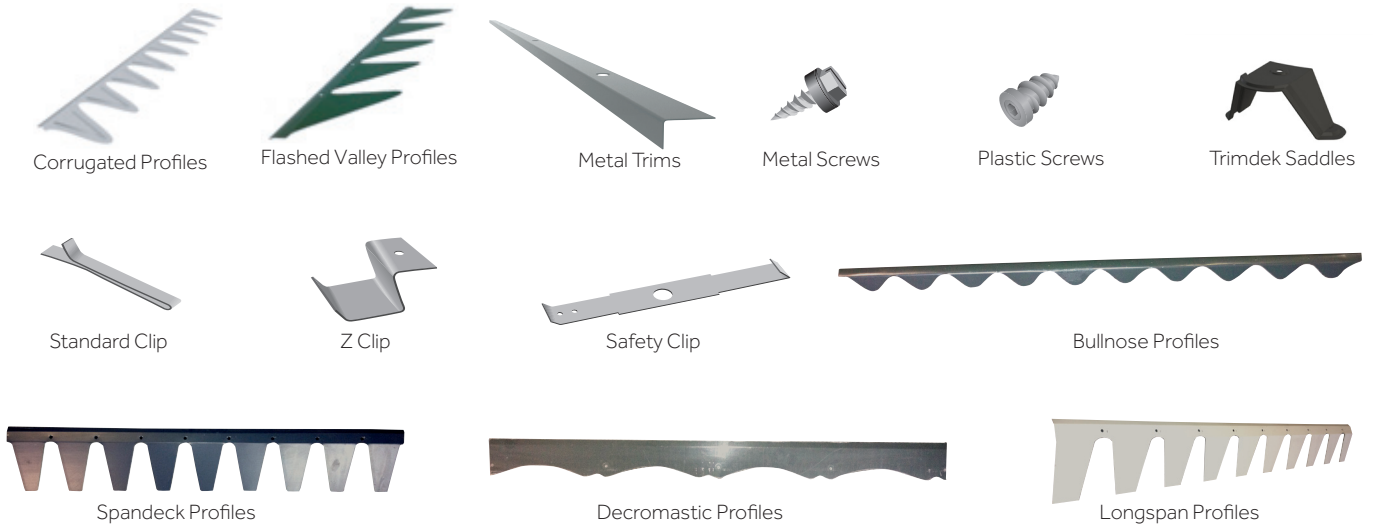
Length per sheet : 915mm\*  
Maximum sheet width : 600mm

### COLOURS

<b>SURFMIST®</b> 	<b>EVENING HAZE®</b> 	<b>ZINCALUME®</b> 	<b>SHALE GREY™</b> 	<b>WINDSPRAY®</b> 	<b>WALLABY™</b> 	<b>BASALT™</b> 
<b>COVE™</b> 	<b>PAPERBARK®</b> 	<b>CLASSIC CREAM™</b> 	<b>DUNE®</b> 	<b>DEEP OCEAN®</b> 	<b>IRONSTONE®</b> 	<b>MONUMENT™</b> 
<b>GULLY™</b> 	<b>JASPER®</b> 	<b>WOODLAND GREY®</b> 	<b>MANGROVE™</b> 	<b>PALE EUCALYPT®</b> 	<b>WILDERNESS®</b> 	<b>COTTAGE GREEN®</b> 
<b>LOFT®</b> 	<b>BUSHLAND®</b> 	<b>SANDBANK®</b> 	<b>PALE TERRACOTTA®</b> 	<b>HEADLAND®</b> 	<b>TERRAIN™</b> 	<b>MANOR RED®</b> 
<b>NIGHT SKY®</b> 	<p>Designed to blend with the colour scheme of your home. It is custom made and designed to match the COLORBOND® steel colour range. However, it is also available in practically any colour you desire on request.</p> <p>COLORBOND® and ZINCALUME® are registered trademarks of BlueScope Steel Limited.</p>					

## 2MM SUPERFINE STEEL GUTTER GUARD

### COMPONENTRY



### ORDERING

An online Ordering Tool is available at [www.bluemountainmesh.com.au](http://www.bluemountainmesh.com.au) or call 1800 612 908. Alternatively you can fax your order to 07 3041 3588 or email to [orders@therhgroup.com.au](mailto:orders@therhgroup.com.au).

### MAINTENANCE

No gutter guard system is completely maintenance free. From time to time, you will need to check your gutter guard for any debris caught on the edge of the mesh or saddles, including the valley mesh. If there is any build-up of sediment or fine debris inside the gutter, use a normal pressure hose to flush the debris through the mesh out of the gutters and down the downpipe. You should not remove the mesh whilst carrying out maintenance.



**tech talk**  
practical information  
expert advice

#### Need some advice? Got a question?

Tech Talk can help. Whether you've got a quick question about your installation or you need more detailed technical advice, Tech Talk can help find an answer – fast. Get in touch for free practical information and expert advice on Blue Mountain Mesh gutter mesh or ember guard solutions. Available for all customer, trade, retail, design and construction enquiries.

Ask Tech Talk now. Phone 1800 612 908.

PO Box 3200, Newstead Qld 4006, Australia  
Tel: +61 7 3248 9600 (TOLL FREE 1800 612 908)  
Fax: +61 7 3041 3588  
Email: [info@bluemountainmesh.com.au](mailto:info@bluemountainmesh.com.au)  
Web: [www.bluemountainmesh.com.au](http://www.bluemountainmesh.com.au)

